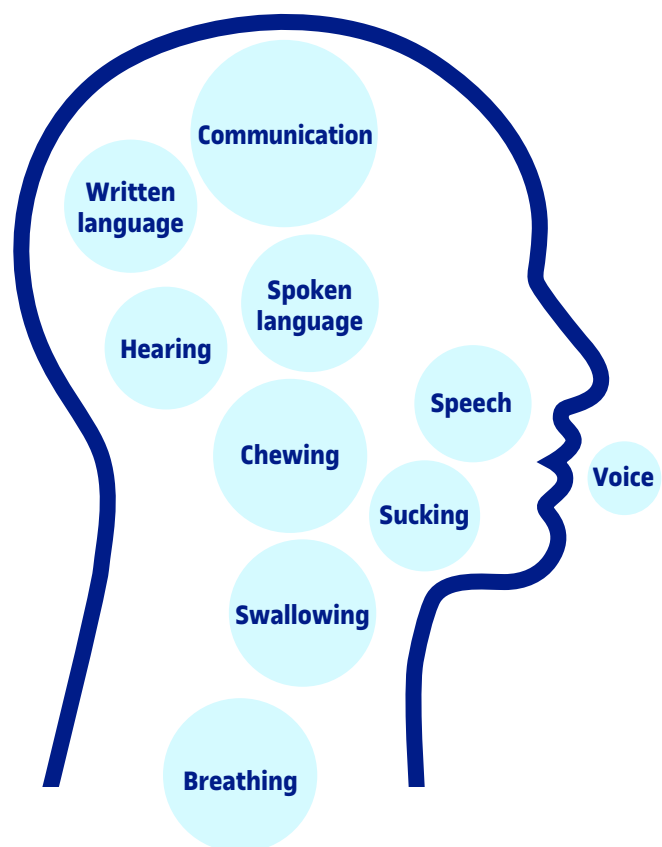


Speech therapy in Healthcare

Speech therapy treats disorders affecting:



In what areas of study does a speech therapist receive training?

- Neurology
- Anatomy
- Physiology
- Acoustics
- Linguistics
- Education
- Development
- Psychology
- Therapy
- Evidence-based practice
- Research

A speech therapist can treat more than 20 different conditions related with disorders involving:



Communication
(communication disorders)
Autistic spectrum disorders, social communication disorder, captivity syndrome, cerebral palsy, etc.



Spoken language
(aphasias, language disorder)
Stroke, developmental language disorders, dementia, etc.



Written language
(dysgraphia, dyslexia, dysorthography)
Difficulties in word decoding, comprehension, graphomotor skills and writing structure, correctness and coherence, etc.



Speech
(dyslalia, dysarthria, dysglosia, dysphemia)
Head and neck cancer, Parkinson's disease, amyotrophic lateral sclerosis, etc.



Voice
(dysphonia)
Vocal cord polyps, vagus nerve palsy, etc.

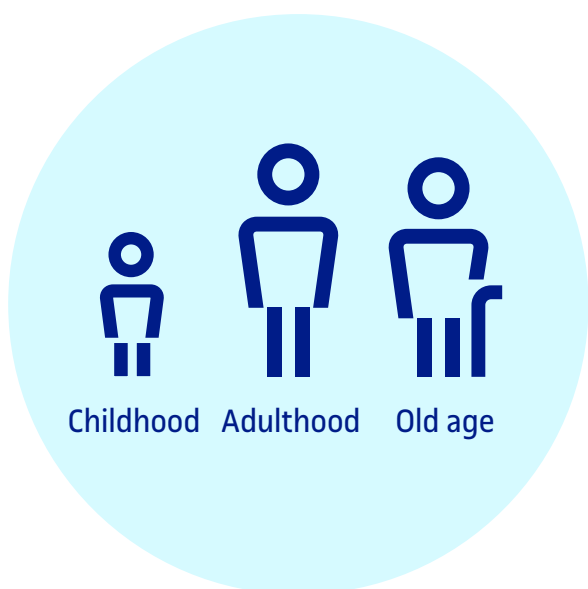


Hearing
(pérdida auditiva)
Deafness, central auditory processing disorder, tinnitus, hyperacusis, etc.



Swallowing, chewing, breathing, sucking, blowing
Dysphagia, difficulty in swallowing, tracheotomy, cleft lip, malocclusion, etc.

Speech therapists improve people's health and quality of life in all its stages



A speech therapist's job involves



These health professionals work in four areas



Education
• Public schools
• Private schools
• School support services



Social education
• Special schools
• Child development and early care centres

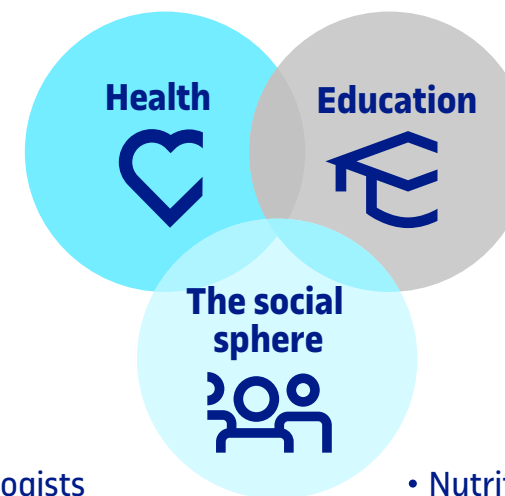


Health
• Hospitals
• Outpatient centres



Social health
• Day hospitals
• Convalescence centres
• Old people's homes
• Associations

A speech therapist works with other professionals within a multidisciplinary environment:



- Neurologists
- Otorhinolaryngologists
- Dentists
- Maxillofacial surgeons
- Rehabilitation physicians
- Paediatricians
- Geriatricians
- Gastroenterologists
- Nutritionists
- Physiotherapists
- Occupational therapists
- Teachers
- Pedagogues
- Social educators
- Psychologists

References

Asociación Española de Logopedia, Foniatría y Audiología e Iberoamericana de Fonoaudiología. (2019). Retrieved from: <http://www.aelfa.org/logopedia.asp>. Comité Permanent de Liaison des Orthophonistes (2019). Retrieved from: <https://cplol.eu.Scope of Practice in Speech-Language Pathology> (2019). Retrieved from: <https://www.asha.org/policy/SP2016-00343/>

Joint Bachelor's Degree in Speech Therapy (UVic-UCC, UOC)